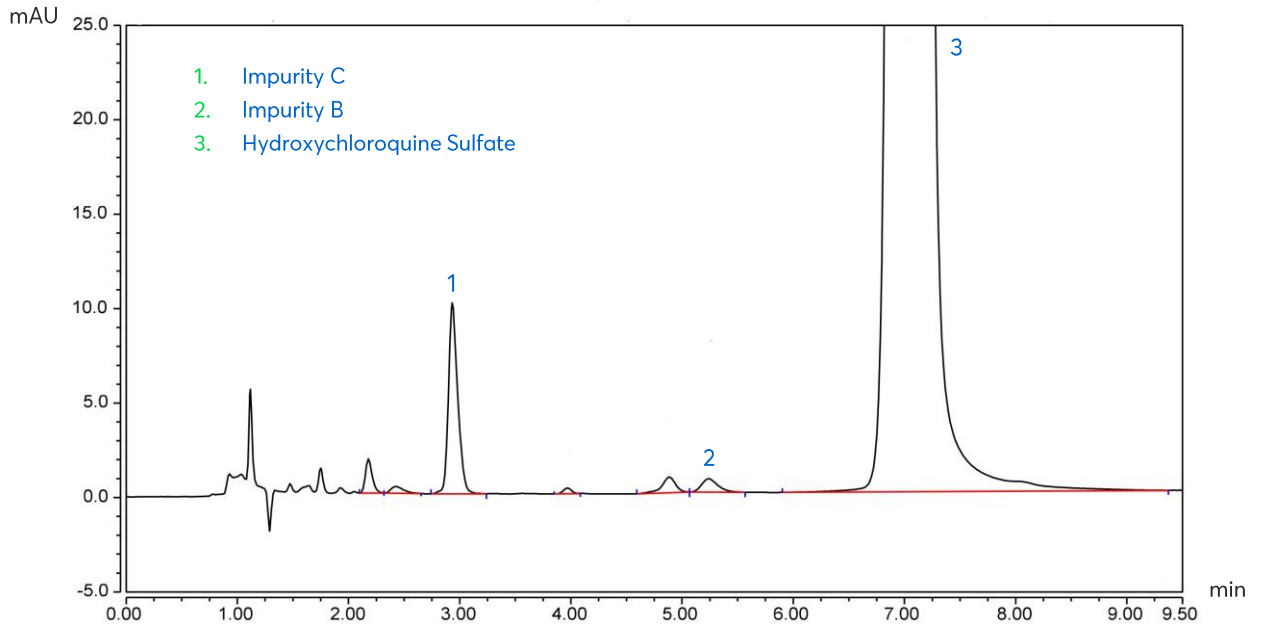


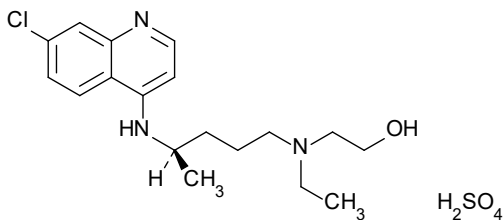
Determination of Hydroxychloroquine Sulfate and Impurities



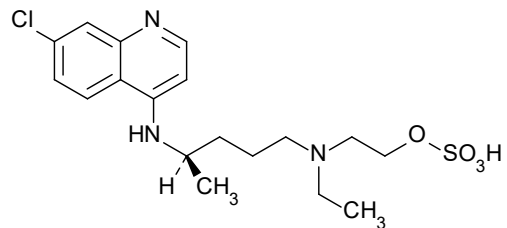
Method Details

CONDITIONS

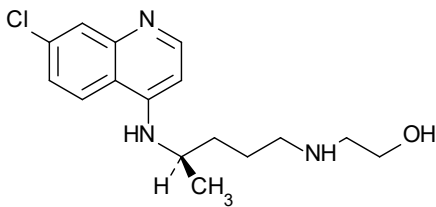
Column:	ACE Excel 5 SuperC18
Dimensions:	150 x 4.6 mm
Mobile Phase:	0.5% NH ₄ OH in H ₂ O (pH 10)/ 0.5% NH ₄ OH in MeCN (61.5:38.5 v/v)
Flow Rate:	1.0 mL/min
Injection:	10 µL
Temperature:	22 °C
Detection:	UV, 220 nm



Structure 1: Hydroxychloroquine Sulfate



Structure 2: Impurity B



Structure 3: Impurity C

ORDERING TABLE

Product	Details	Size	Part Number
ACE Excel 5 SuperC18	HPLC column	150 x 4.6 mm	76393-852
J.T.Baker Acetonitrile ≥99.9%	Amber glass bottle	Each(1/ltm/Bx) or Case of 4	JT9017-33
J.T.Baker HiPerSolv CHROMANORM®	Aluminum bottle	Each (4l) or Case of 4	BDH83639.402
J.T.Baker Amonia Solution 32% HiPerSolv CHROMANORM® for HPLC	Glass bottle	Each (100ml)	BDH153312K

Reproduced with permission of Bulgarian Scientific Pharmaceutical Laboratory at the Erudita Pharmacy of Pediatrics, Bulgaria and Chromassist Ltd, Bulgaria